



Tim Hafer
 4 time #1 WV RE/MAX AGENT
 1999, 2001, 2002
 SRES, CRS, GRI
 Mobile: 304-279-2600



TIM HAFER

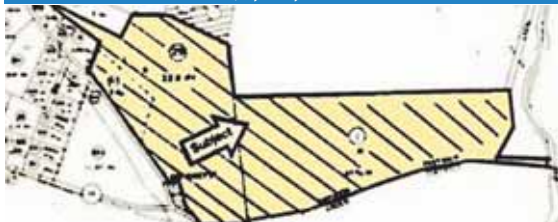
**Want it Sold?
 Talk to Tim!
 timhafer.com**

Real Estate Group
 1314 Edwin Miller Blvd.
 Martinsburg, WV 25404
 304-263-2600
 877-896-2600

Constance Barnhart, Broker



CEMETERY ROAD
 \$5,262,400



80.96 acres on Cemetery Road with public water and sewer available. Topography is gently rolling. Raw land with a lot of potential. **"TALK TO TIM"**. BE5565023

1825 CHARLES TOWN ROAD
 \$895,000



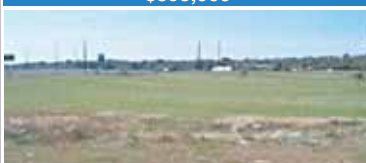
Over 18,000 sq. ft. Perfect location between Charles Town and Martinsburg on heavily traveled Rt. 9. Small office, BA, 16' ceilings. Office, large show room and warehouse. Call for details. 24 hour notice to show. **"TALK TO TIM"**. BE6200688

VINEYARD ROAD
 \$895,000



Waterfront Horse Farm on 15 acres south of Honeywood fronting on the Potomac River, including a barn and small house. Amazing views! **"TALK TO TIM"** BE6161394

LYNNEHAVEN BLVD
 \$895,000



10 acre corner parcel with I-81 frontage just past the Spring Mills Exit. Water and sewer hookups available. **"TALK TO TIM"** BE6268202

191 DUCHESS WAY
 \$430,000



5 BR, 4.5 BA home. MBR 1st floor. View of mountains. Level 2 acre lot. In-ground heated pool w/vinyl privacy fence. Covered porch. Custom interior including gourmet kitchen. Corian counters, ceramic floor, central vac, gas FP, vaulted ceilings, 2 of 4 bedrooms up have private baths, every room wired w/ phone, cable & CAT5, intercom system. MBR has oversized glass shower, jetted tub & his/hers walk-in closets. Call for information! **"TALK TO TIM"** BE6354066

91 COFFEE POT LANE
 \$178,900



2005 Fleetwood Manufactured home with over 2000 sf of living space, on 2 unrestricted acres. Upgraded kitchen cabinets, island and appliances. Master suite has 2 walk-in closets and master bath features jacuzzi tub and separate shower. Easy commute to Winchester and Berkeley Springs. **"TALK TO TIM"** MO6326631

1015 AZTEC DRIVE
 \$159,000



Very nice town home in Mills Farm. 3 BR, 2.5 BA open floor plan, finished lower level basement with garage. Shows well, won't last long. Call for more information. **"TALK TO TIM"** BE6381074

NESTLE QUARRY ROAD
 \$119,000



Wooded acres in Nestle Woods off of Nestle Quarry Road. Lots have been perced and ready to build on. Very private lot that is only 2 minutes from I-81. Call for copy of plat or covenants and restrictions. **"TALK TO TIM"** BE6263278

520 KYLE DRIVE
 \$160,000



Beautiful 3 BR, 2.5 BA townhome in Prentiss Point S/D. Very good condition. Master BA with separate shower and tub. Attached one car garage. Walk-in closets

and back deck leading to backyard. Townhome also includes beautiful brick front and large kitchen. Don't miss out on this spectacular town house. **"TALK TO TIM"** BE6132578

GRIMALDI WAY
 \$95,000



Nice building lot on 5 acres in Crescent Orchard S/D. Lot 77, 100% wooded. Lot 78 & 79 available also. Restrictive Covenants apply. **"TALK TO TIM"** BE6185998

JURA DRIVE
 \$90,000



5 acres in Crescent Orchard Subdivision. Great price for this beautiful lot. Build your dream home today. **"TALK TO TIM"** for more information. BE6254871